

Phoneme

- A phoneme is the smallest unit of sound in a word.



Graphemes

- A letter or sequence of letters that represents a phoneme.



Digraph

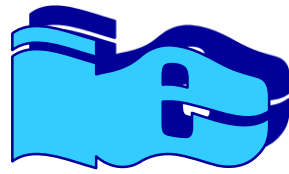
- Digraphs are two letters making one sound or phoneme.



Vowel Digraph

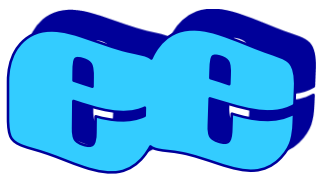
- Vowel digraphs are two letters making one vowel sound.



















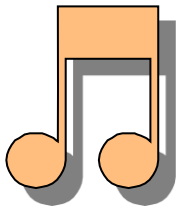
Split Digraph

cake



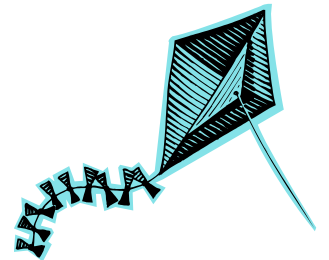
rope

- Split digraphs are two letters, not next to each other, making a vowel sound.



tune

kite

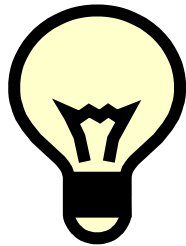


Trigraph

- Trigraphs are three letters making one sound/phoneme.



watch



light

bridge

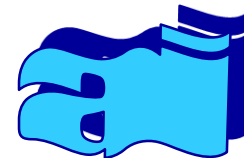


Adjacent Consonants

- Two or more consonants sitting next to each other in a word.

Segmenting

- To help your spelling – say the word and break it up into individual sounds. Match the correct letters to the sounds.



Blending

- To help your reading – look at the letters in a word. Sound out the phonemes and merge them in the order that they are written.